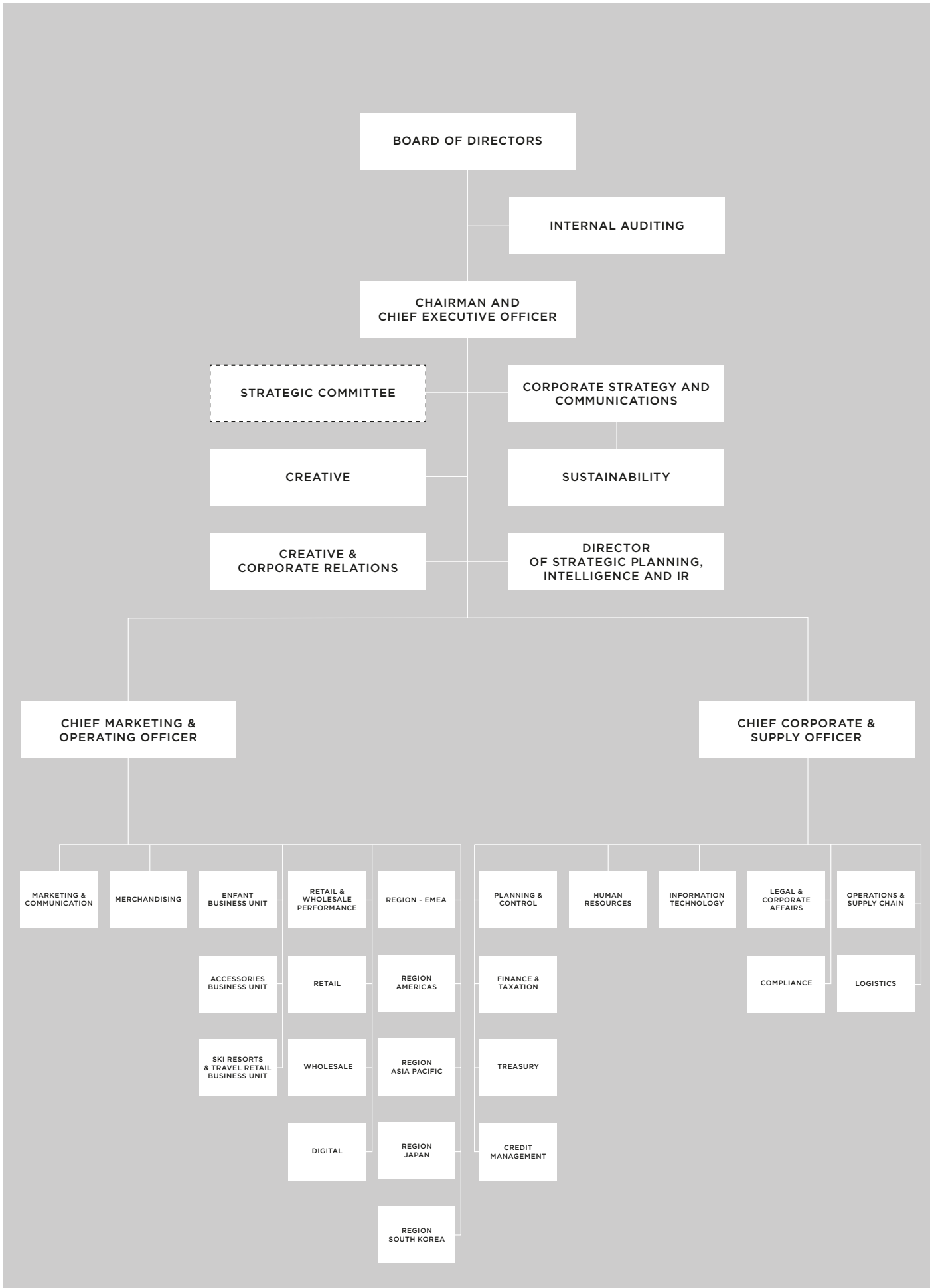


# ORGANIGRAMMA



## **BOARD OF DIRECTORS**

REMO RUFFINI  
ROBERTO EGGS  
VIRGINIE MORGON  
NERIO ALESSANDRI  
MARCO DE BENEDETTI  
GABRIELE GALATERI DI GENOLA  
DIVA MORIANI  
STEPHANIE PHAIR  
GUIDO PIANAROLI  
LUCIANO SANTEL  
ALESSANDRA GRITTI

## **INTERNAL AUDITING**

RICCARDO GREGHI

## **CHAIRMAN AND CHIEF EXECUTIVE OFFICIER**

REMO RUFFINI

## **STRATEGIC COMMITTEE**

REMO RUFFINI  
LUCIANO SANTEL  
ROBERTO EGGS  
ANDREA TIEGHI  
FRANCESCA BACCI

## **CREATIVE**

REMO RUFFINI

## **CREATIVE & CORPORATE RELATIONS**

MARIA CRISTINA GNUGNOLI

## **DIRECTOR OF STRATEGIC PLANNING, INTELLIGENCE AND IR**

PAOLA DURANTE

## **CORPORATE STRATEGY AND COMMUNICATIONS**

MINA PICCININI

## **CHIEF MARKETING & OPERATING OFFICER**

ROBERTO EGGS

## **CHIEF CORPORATE & SUPPLY OFFICER**

LUCIANO SANTEL