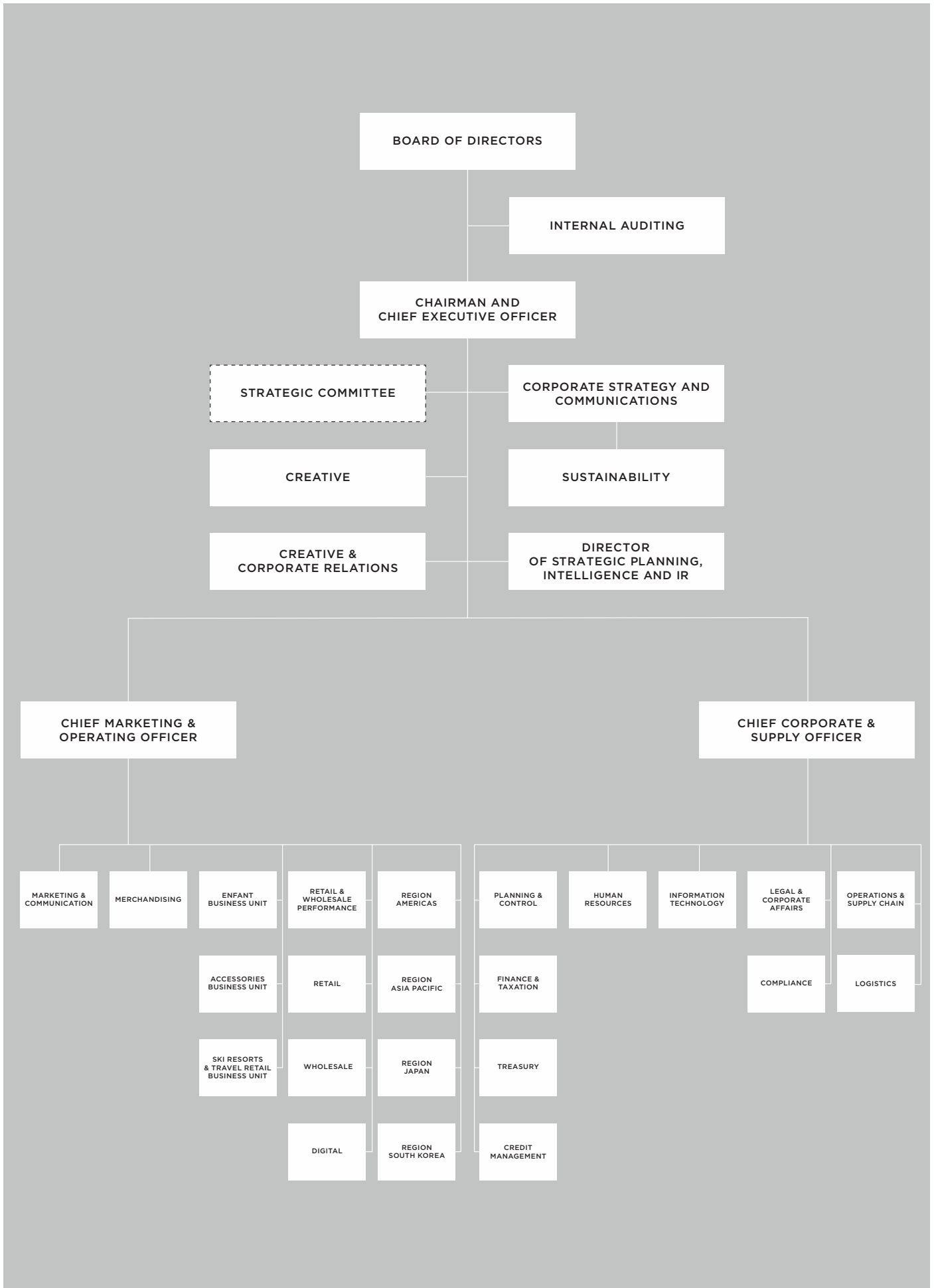


ORGANIZATION CHART



BOARD OF DIRECTORS

REMO RUFFINI
ROBERTO EGGS
VIRGINIE MORGON
NERIO ALESSANDRI
MARCO DE BENEDETTI
GABRIELE GALATERI DI GENOLA
DIVA MORIANI
STEPHANIE PHAIR
GUIDO PIANAROLI
LUCIANO SANTEL
ALESSANDRA GRITTI

INTERNAL AUDITING

RICCARDO GREGHI

CHAIRMAN AND CHIEF EXECUTIVE OFFICIER

REMO RUFFINI

STRATEGIC COMMITTEE

REMO RUFFINI
LUCIANO SANTEL
ROBERTO EGGS
ANDREA TIEGHI
FRANCESCA BACCI

CREATIVE

REMO RUFFINI

CREATIVE & CORPORATE RELATIONS

MARIA CRISTINA GNUGNOLI

DIRECTOR OF STRATEGIC PLANNING, INTELLIGENCE AND IR

PAOLA DURANTE

CORPORATE STRATEGY AND COMMUNICATIONS

MINA PICCININI

CHIEF MARKETING & OPERATING OFFICER

ROBERTO EGGS

CHIEF CORPORATE & SUPPLY OFFICER

LUCIANO SANTEL