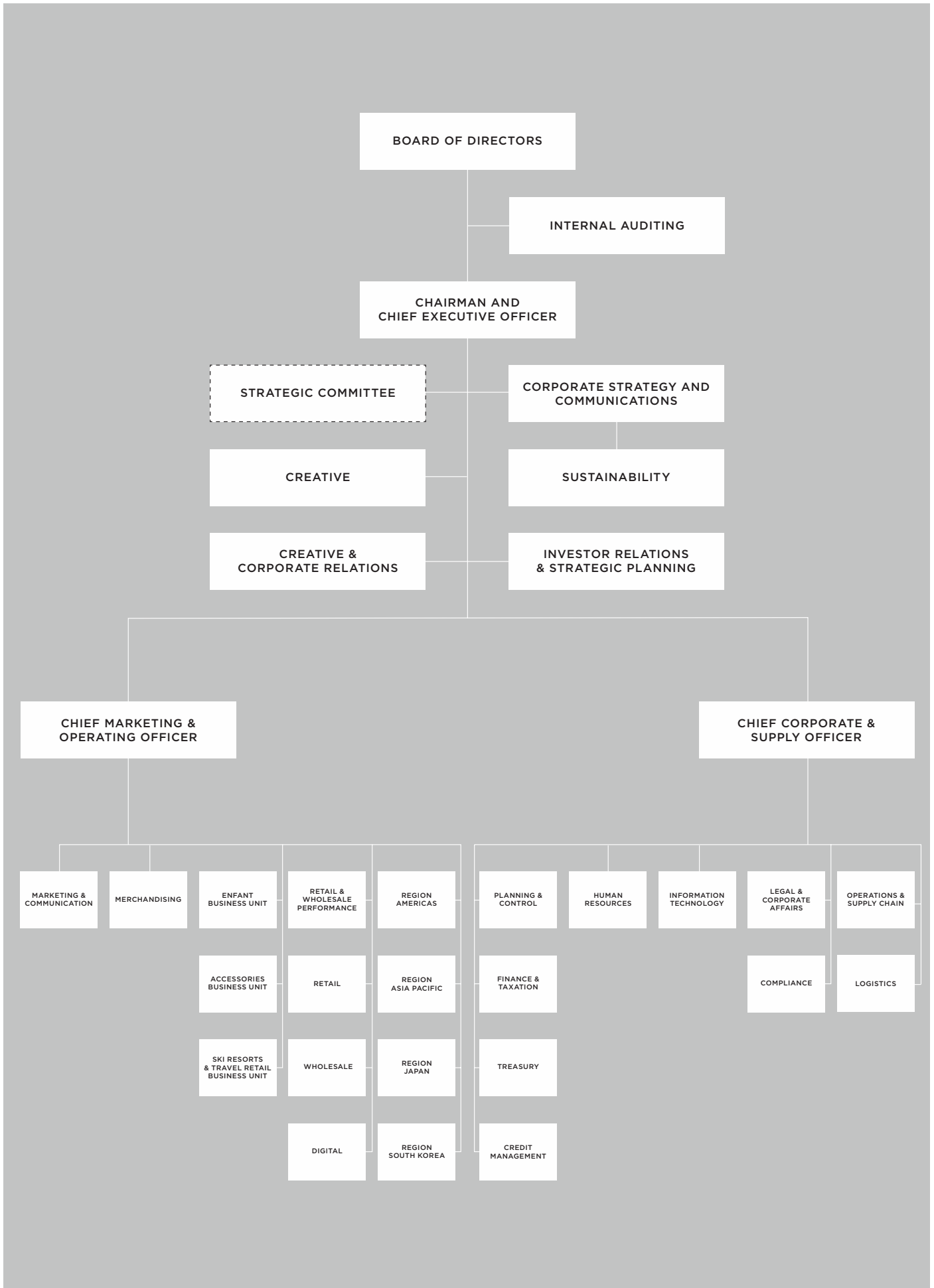


ORGANIGRAMMA



BOARD OF DIRECTORS

REMO RUFFINI
VIRGINIE MORGON
NERIO ALESSANDRI
SERGIO BUONGIOVANNI
MARCO DE BENEDETTI
GABRIELE GALATERI DI GENOLA
DIVA MORIANI
STEPHANIE PHAIR
GUIDO PIANAROLI
LUCIANO SANTEL
JUAN CARLOS TORRES CARRETERO

INTERNAL AUDITING

RICCARDO GREGHI

CHAIRMAN AND CHIEF EXECUTIVE OFFICIER

REMO RUFFINI

STRATEGIC COMMITTEE

REMO RUFFINI
LUCIANO SANTEL
ROBERTO EGGS
SERGIO BUONGIOVANNI
ANDREA TIEGHI

CREATIVE

REMO RUFFINI

CREATIVE & CORPORATE RELATIONS

MARIA CRISTINA GNUGNOLI

INVESTOR RELATIONS & STRATEGIC PLANNING

PAOLA DURANTE

CORPORATE STRATEGY AND COMMUNICATIONS

MINA PICCININI

CHIEF MARKETING & OPERATING OFFICER

ROBERTO EGGS

CHIEF CORPORATE & SUPPLY OFFICER

LUCIANO SANTEL